

www.BOSTITCH.com

BOSTITCH®

Instruction manual

BCF28WW

20V* MAX

28° CORDLESS FRAMING NAILERS



BCF28WW

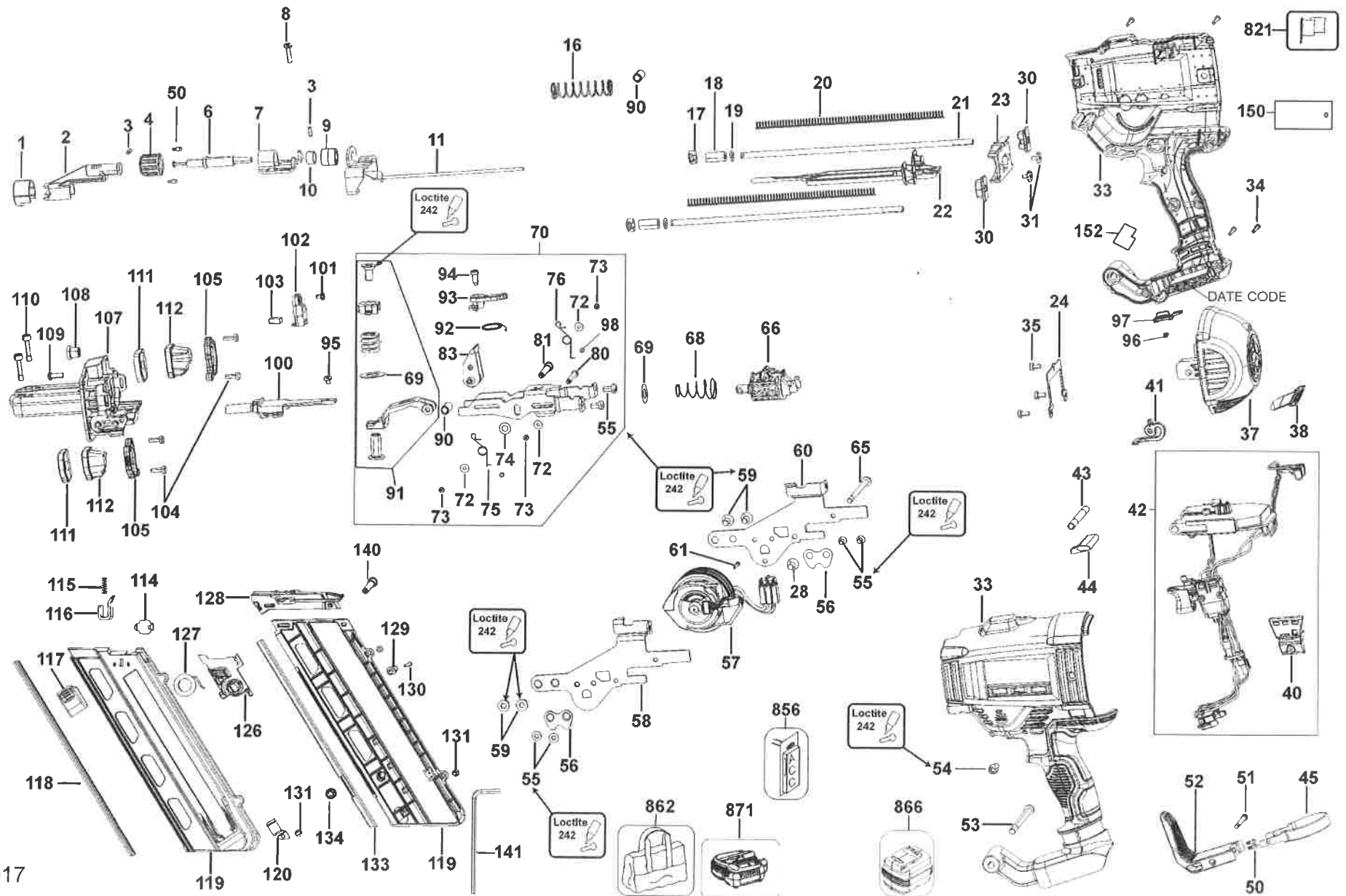


NOTE: NEVER spray or apply lubricants or cleaning solvents inside the tool. This can seriously affect the life and performance of the tool.

REMARQUE : NE JAMAIS vaporiser, ou appliquer de toute autre façon, aucun lubrifiant ou solvant de nettoyage dans l'outil. Cela pourrait affecter sérieusement la durée de vie et les performances de l'outil.

NOTA: NUNCA pulverice ni aplique de cualquier otra forma lubricantes o disolventes de limpieza dentro de la herramienta. Esto puede afectar seriamente la vida útil y el funcionamiento de la herramienta.

BCF28WWB Type10 Battery Framing Nailer



Parts List for BCF28WWB Type10 Battery Framing Nailer

Item	Part Number	Description	Item	Part Number	Description	Item	Part Number	Description
1	N116163	COVER	53	N123751	SCREW	105	N082940	RETAINER
2	N093795	TRIP ASSEMBLY	54	N093611	SHOULDER SCREW	107	N438177	CASTING
3	N153045	ROLL PIN	55	N093608	FLAT HEAD SCREW	108	N061668	BUSHING
4	N037233	ADJUSTER	56	N035847	RETAINING PLATE	109	330019-13	SCREW,PLASTITE
6	N034174	SHAFT	57	N473974	MOTOR ASSEMBLY	110	N061605	SPECIAL BOLT
7	N034374	SUPPORT	58	N034749	FRAME	111	N133209	DAMPER
8	N432422	SCREW	59	N477247	FLAT HEAD SCREW	112	N233940	BUMPERS
9	N432659	LIMITER	60	N034750	FRAME	114	N034726	RETAINER
10	N044294	SLEEVE	61	N056875	FLAT HEAD SCREW	115	N061545	COMPRESSION SPRING
11	N380152	TRIP	65	N439516	MACHINE SCREW	116	N307220	LOCKING DEVICE
16	N061508	SPRING	66	N233949	SOLENOID ASSY.	117	N061505	LATCH BUTTON
17	N192671	CAP	68	N219872	SPRING	118	N034716	CLIP
18	N088831	BUMPER	69	N114861	WASHER	119	N412004	MAGAZINE
19	N088833	WASHER	70	N473189	CARRIAGE ASSY.	120	N114100	LOCK LEVER
20	N233943	RETURN SPRING	72	330016-25	PLAIN WASHER	126	N411327	PUSHER
21	N036350	RAIL	73	391814-00	GROMMET	127	N128653	SPRING ASSEMBLY
23	N036349	CAP	74	N114961	WASHER	128	N411676	INTERFACE
24	N121870	PLATE	75	N231397	SPRING	129	N061506	INSERT
28	N056875	FLAT HEAD SCREW	76	N231398	SPRING	130	330019-62	SCREW,THD.FORM
30	N243999	BUMPER KIT	80	N083553	PIN	131	330065-06	SCREW
31	N088832	SCREW	81	N034920	PIN	133	N034743	LINER
33	N443607	HOUSING SET	83	N233950	ROLLER ASSY.	134	330021-07	STOP NUT
34	330019-24	SCREW PLASTITE	90	N259819	SLEEVE	140	N468419	SCREW
35	N123731	SCREW	91	N234259	BEAM	141	N061664	HEX WRENCH
37	N254341	END CAP	92	N086806	TORSION SPRING	150	N454017	HANG
38	N130853	WINDOW	93	N086157	LEVER	152	N453989	LABEL
40	N150581	CAP	94	N113536	SCREW	821	N526595	RATING LABEL
40	N093415	SELECTOR	95	N123971	SCREW	862	N493706	TOOL BAG
41	N055786	ACTUATOR	96	N087259	DETENT SPRING	866	BCB204	BATTERY PACK
42	N512737	MODULE	97	N320039	SPEED SELECTOR	871	BCB115	CHARGER
43	N439401	SPACER	98	N235059	ISOLATOR			
44	N039287	LOCK OFF	100	N233939	INSERT			
45	N080411	CLAMP	101	949894-06	SCREW			
50	326467-00	DETENT	102	N194170	HOLDER			
51	N093728	SCREW	103	N089554	MAGNET			
52	N080410	HOOK	104	324006-16	SCREW			